

# The Blackbox Window Manager

**Edward Dale**

# Agenda

- **What is Blackbox?**
- **Installation/Configuration**
- **Desktop Appearance**
- **Related Tools**
- **Other Resources**

# What is it?

- **An X-Windows window manager**
  - Controls window appearance and interaction
- **Designed for speed and minimalism**
  - No built-in support for icons or images
- **No common code with other window managers**
- **Open source**
  - Can edit code to add new features

# Installation in the CS Labs

- Download most recent version ( 0.62.0 pre4 )
- Uncompress
- Run:
  - `./configure --x-includes=/usr/openwin/include`  
`--x-libraries=/usr/openwin/lib`  
`--prefix=`cd; pwd`/blackbox`
  - `make`
  - `make install`
  - Replace mwm line with path to blackbox in  
`~/.Xsession` and `~/.xinitrc`
  - Select OpenDesktop upon next login

# Basic Configuration

- **Configuration file: ~/.blackboxrc**
- **X resources format**
  - Plain text, editable using any text editor
- **Configures:**
  - Workspace number and names
  - Focus model
  - Window placement
  - Slit and Toolbar placement
  - Additional configuration files

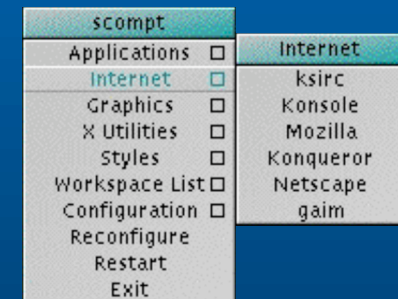
# The Root Menu

- **Appearance**

- Similar to Windows Start menu
- Appears when desktop is clicked with right mouse button

- **Configuration**

- Stored in plain text file
- Editable via text editor or `bbconf`
- Unlimited sub-menus
- Intuitive format



# Styles

- **Appearance**

- All surfaces are either solid colors, patterns, or gradients
- Some provision for background images
- Dynamically configurable

- **Configuration**

- Contained in a single text file with optional background image
- Can configure appearance of toolbar, menus, and window decorations
- Editable with a text editor or `bbconf`

# Desktop Elements

- **Workspaces**
  - Create multiple desktops independent from another
- **The Slit**
  - Similar to Windows system tray
  - Contains dockapps and bbttools programs
- **The Toolbar**
  - Displays clock and title of current workspace and window
  - Contains buttons to iterate through workspaces and windows





# bbconf

- **Goal: Provide a GUI to configure anything Blackbox related, including:**
  - Styles
  - Menus
  - Keybindings
- **Separate program written by Blackbox developers**
- **Masks complexity of hand-editing configuration**

# bbtools

- A suite of simple programs that display the status of various resources including:
  - Mailbox contents (bbmail)
  - CPU load (bbsload)
  - Desktop Pager (bbpager)
  - Local weather (bbweather)
- bbkeys is also included here
  - Provides keybindings



# Resources

- **Official Website**
  - <http://blackbox.alug.org>
- **Sourceforge Project Page**
  - <http://www.sf.net/projects/blackboxwm>
- **Official Documentation**
  - <http://bb.classic.themes.org/php/docs.phtml>
- **Mailing List**
  - <http://www.mail-archive.com/blackbox@trolltech.com>

# Resources, cont.

- **bbtools**
  - <http://bbtools.thelinuxcommunity.org>
- **bbconf**
  - <http://bbconf.sf.net>
- **Google**
  - <http://www.google.com>